

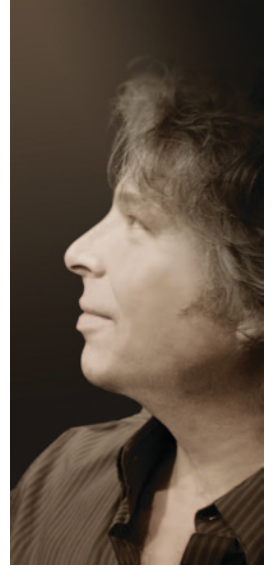


ira reines

SCULPTURAL
ETHEREALISM

IRA REINES

Philosophy, cosmology and the sublime beauty of the works of Michelangelo, Rodin and Bernini are the inspiration from which Ira Reines draws to create his profound sculptural thesis on the relationships of order and chaos to man and divinity.



“Arising from chaos, my sculptures embody spiritual beauty, a sense of ascension, grace, flight, awakening, and rebirth that is a metaphor for divinity.”

Master sculptor Ira Reines
with his concept of Sculptural Etherealism
1957 – current

In 1980, the iconic father of Art Deco and master artist Romain de Tirtoff—better known as Erté—aspired to have his beautiful drawings and paintings realized as sculpture. Having no sculptural experience, Erté sought out a sculptor whose talent and sculptural ability would faithfully translate those two-dimensional works into sublimely beautiful three dimensional bronzes.

He selected Ira Reines, an award-winning young sculptural prodigy whose talent and passion impressed Erté.

Reines collaborated closely with Erté for eleven years, translating the master’s celebrated two-dimensional couture designs into a series of seventy bronze sculptures. Those sculptures were distributed world-wide and reside in the collections of well-known museums including Great Britain’s Victoria and Albert Museum, New York’s Metropolitan Museum of Art, Coral Springs Museum in Florida, and the Shanghai Duolun Museum of Modern Art in Shanghai, China.

Upon Erté’s passing in 1990, Reines returned to his own sculptural vision exploring the relationship between man and the cosmos, order and chaos and the sublime divine beauty that arises from it. Over decades of seclusion, meditation and introspection, he evolved the sculpting style known as “Sculptural Etherealism”—delicate and intricately formed figures of near-perfect beauty, emerging as if in the process of creation, replete with splendor and spirituality arising from the intricate relationships between order and chaos—beauty born of chaos, form created from formlessness.

CHRONOLOGY



- Ira Reines was born in New York, New York on December 3, 1957 and by the age of five his sculptural talents began to emerge.
- At nineteen, one of Reines' sculptures caught the eye of the director of the Medallic Art Company of Danbury, Connecticut who offered him employment sculpting medallions.
- Reines studied the works of Michelangelo, Bernini, and Rodin most passionately and even had the good fortune to experience their masterpieces first-hand in Rome and Florence when he was twenty, a very inspiring experience.
- In 1980, Ira Reines was hired to work with Art Deco Master Erté, considered by many as the father of Art Deco. Ira worked closely with Erté, translating the master's two-dimensional designs into seventy bronze sculptures that were sold world-wide.
- In 1991, after Erté's death, Reines' skills and personal style in fine art sculpting began to evolve, undergoing a metamorphosis from classical mythological themes to more contemporary ones.
- In 1998, Ira Reines lost both of his parents. He began to channel and transform that pain into positive energy by creating beautiful sculptures featuring the ascension and re-birth of the human spirit, the soul's eternal flight with divinity and love out of chaos.
- Currently, such notables as Elizabeth Taylor, Elton John, Johnny Carson, Barbara Streisand, The Metropolitan Museum of Art in New York, The Smithsonian in Washington D.C., Southern Nevada Museum of Fine Art in Las Vegas, and The Victoria and Albert Museum in London have sculptural pieces created by Ira Reines while in association with the famous Art Deco Master Erté, but his most notable placement is his bronze "Neptune" which is on permanent display on the grounds of The Society of the Four Arts in West Palm Beach, Florida.
- In 2012, a wealthy Reines collector donated the monumental work "Aurora" to Gardner-Webb University in North Carolina as part of their gift of the university's new student center. "Aurora" is permanently installed at the main entrance to the Center.



"Aurora"



Reines and Erté



"Neptune"

NOTABLE COLLECTIONS

Sculptures that Reines had created during his association with Art Deco Master Erté may be found in the collections of such notables as:

- Actress Elizabeth Taylor
- Singer Elton John
- Former Talk-show Host Johnny Carson
- Singer/Actress Barbara Streisand

Museums and Public Installations:

- Victoria & Albert Museum, London, England.
- Metropolitan Museum of Art, New York, New York — The largest museum in the United States, their artwork collection of two million pieces includes Erté's works while collaborating with Reines.
- Museum 1999, Tokyo, Japan — A Japanese museum with a collection of Erté created by Reines that exceeds in quantity the number of pieces held by the Metropolitan Museum of Art.
- Four Arts Gardens — A 1981 heroic installation of Ira Bruce Reines' sculpture titled "Neptune" is part of the collection of this botanical garden in Palm Beach, Florida which features the Phillip Hulitar Sculpture Garden and the Esther B. O'Keefe Art Gallery.
- Shanghai Doulun Museum of Modern Art — This museum, which is also known as the Doland MOMA the only government supported modern art museum in the People's Republic of China, has accepted Reines sculpture as part of their permanent collection.
 - "Aurora" — Gardner-Webb University, Boiling Spring, NC.
 - Southern Nevada Museum of Fine Art, Las Vegas, Nevada.



sculptural etherealism

THE ART OF IRA REINES

A guiding principle behind the “Sculptural Etherealism” of Master Sculptor Ira Reines is that there is no beauty or order without chaos since chaos is the precursor to creation itself. True to that concept, Reines bronze thesis “Sculptural Etherealism” effects the creation of visual essays that eloquently articulate divine order and beauty arising from the divine disorder of chaos, in a uniquely and universally significant way.

In the spirit of “Sculptural Etherealism”, Reines sculpts delicate and intricately formed figures of sublime beauty, emerging from chaos and disorder as if in the spiritual process of becoming and awakening into order, form and enlightenment.

His masterful interpretations of “Sculptural Etherealism” go beyond their exquisite beauty to address humanity's quest for faith, love, inspiration, hope and an understanding of our place within the vastness of the universe and the fullness of time.

“My art has a spiritual beauty, a sense of ascension, grace, flight, awakening, and rebirth that is significant and rare. It is vital to me that it conveys beauty and the juxtaposition of order and chaos as metaphors for divinity.” – Ira Reines



ARTIST STATEMENT

My art depicts the human spirit in a mythic state of “becoming”, of “awakening”, that is the culminating moment of spiritual transcendence when the soul becomes one with eternity as it emerges from the elemental strata of fire, stone, ocean, and wind. It is a dance of divinity and chaos, the breath of desire as it rises in a flight of graceful ascension.

I see the infinitely expanding universe as being saturated with the force of intention, the soul of love ever yearning, and an eternal flight of awakening. In my sculptures these concepts take on idealized god/goddess forms, the male; creational forces, surging and inviolate, the female; yielding, sensual, gentle, and compassionate. Their combined threads weave the myriad planes of light and love and Divinity.

WORLD RENOWNED ARTIST IRA REINES AWARDED THE GOLD MEDAL FROM MONDIAL ART ACADEMY

Ira Reines wins top award for bronze sculpture in the Sculpture category at Mondial Art Academy

BEVERLY HILLS, CALIF. (February 25, 2021) — **Ira Reines**, world renowned master sculptor, represented by Masterpiece Publishing and Winn Slavin Fine Art of Beverly Hills, was awarded the gold medal in Sculpture from the Mondial Art Academy. With tens of thousands of notable artists competing, many of whom were professionals who submitted multiple pieces, the competition was stiffer than ever. Overall, there were 45 international judges who reviewed the works and granted the awards.

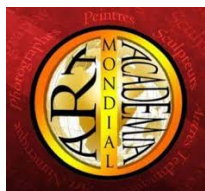
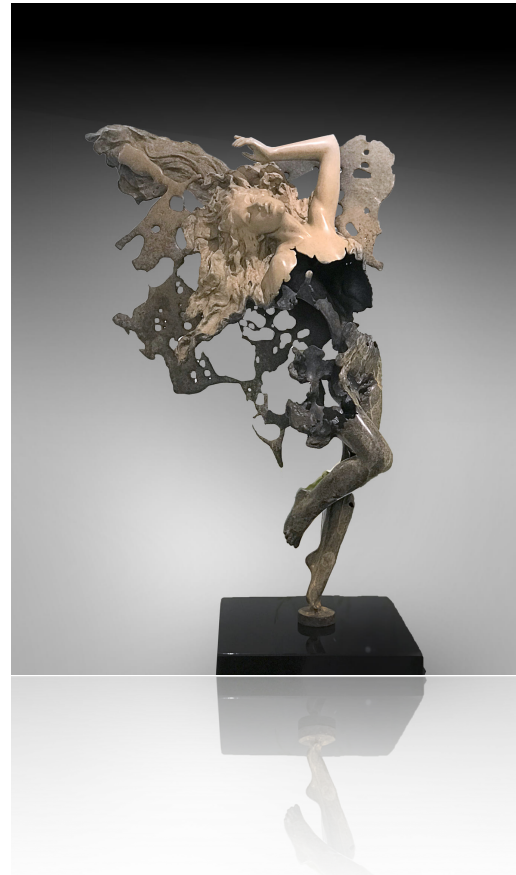
“Arising from chaos, my sculptures embody spiritual beauty, a sense of ascension, grace, flight, awakening, and rebirth that is a metaphor for divinity.”

Ira Reines’ work is featured at both Winn Slavin Fine Art galleries in Beverly Hills, CA including a new location on the famed Rodeo Drive.

###

About Ira Reines: Philosophy, cosmology and the sublime beauty of the works of Michelangelo, Rodin and Bernini are the inspiration from which Ira Reines draws to create his profound sculptural thesis on the relationships of order and chaos to man and divinity.

Over decades of seclusion, meditation and introspection, Reines evolved the sculpting style known as “Sculptural Etherealism”—delicate and intricately formed figures of near-perfect beauty, emerging as if in the process of creation, replete with splendor and spirituality arising from the intricate relationships between order and chaos—beauty born of chaos, form created from formlessness.



LOST WAX PROCESS



Step #0 – Clay

The artist starts with a vision of the creation and then transforms the clay into the Original Sculpture.



Step #1 – Silicon Master Mold

At the foundry, the clay is cut into sections. A rubber or rubber-like mold is made for each section from the clay. Today this tends to be a two part cold pour silicon based formula.



Step #2 – Wax

Hot wax is poured into each silicon master mold section which creates a wax positive. The wax is completely hand reworked to eliminate flaws and the sculptor personally undertakes this stage. Wax rods called sprues are then melted into place to create an arterial system around each section so that molten bronze will run into every crevice and sculptural detail.



Step #3 – Disposable Ceramic-Sand Mold

The wax is “invested” or coated with Layers of Ceramic-shell (grains of sands) to form a harder Ceramic-mold “Disposable”. Under high heat the wax is melted out of the shell creating a hollow negative space within the shell (Hence the ‘Lost Wax’ terminology).



Step #4 – Raw Bronze

Molten Bronze is poured into the hardened Ceramic-mold to produce the art. When cool, the Ceramic-mold is chipped away to attain the “raw” bronze work. Then the bronze arterial sprue system is sawed away from the sculpture.



Step #5 – Final

The sections of the sculpture are welded back into place to form the shape of the Original Clay Sculpture. Next, all seams, interstices, sprue mounds, holes etc, are filed, welded, pounded out of the metal in the process known as “chasing.” The finished work is sand blasted and the art of the patina (A formulation developed by the sculptor as to the acid formulation which gives bronze its final luster and color) is applied.

LUCITE CASTING PROCESS



The process used to create Lucite sculptures is quite a radical departure from that used to cast bronze. The process and the utilization of the mold are very unforgiving, for unlike bronze casting, Lucite material cannot be added after casting.

During the pre-molding phase, a clay or plaster original initially undergoes a series of precision scans by a CGI (computer generated imaging) expert. These will be used in the creation of a plaster or epoxy positive that contains all of the nuances that are to be in the final sculpture.

Next a mold is cast of a flexible proprietary material under high pressure and is checked and double checked to assure that there are no flaws. The acrylic or Lucite is then screened for imperfections in a clean room before UV agents are introduced and the material emulates the consistency of cold honey.

This prepared material is carefully poured into the mold which is then pressurized to insure that even the smallest crevices are filled before the material is cured using a combination of heat and pressure. The completed sculpture has an opaque appearance before precision sanding and hand polishing gives the work a crystal-like clarity. As a final step, surfaces to be frosted are blasted with a mixture of glass and aluminum.